



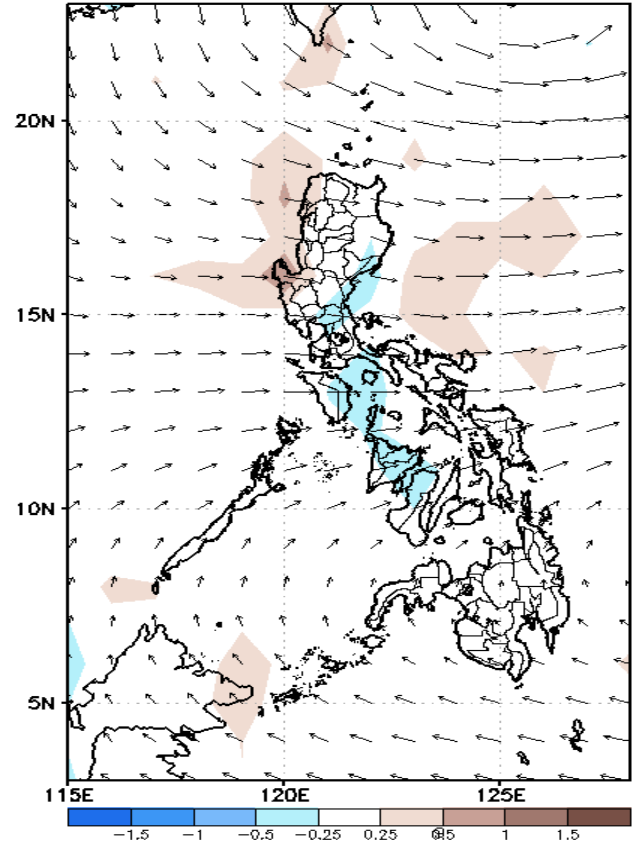
Week 1 & Week 2 Forecast for the Philippines using GEFS Model



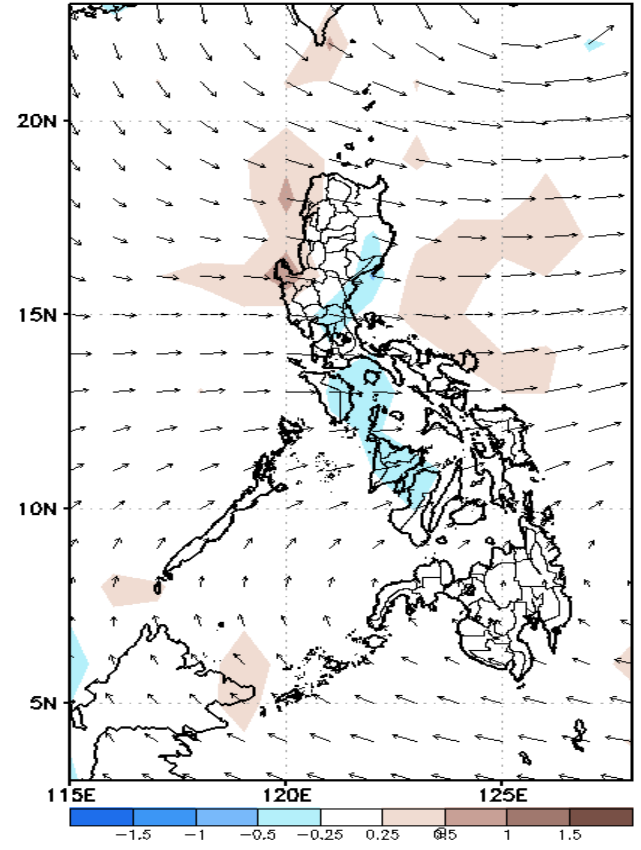
GEFS Week-1 Forecasts: Wind Anomaly Forecast

Week 1: Sep 09-15, 2022

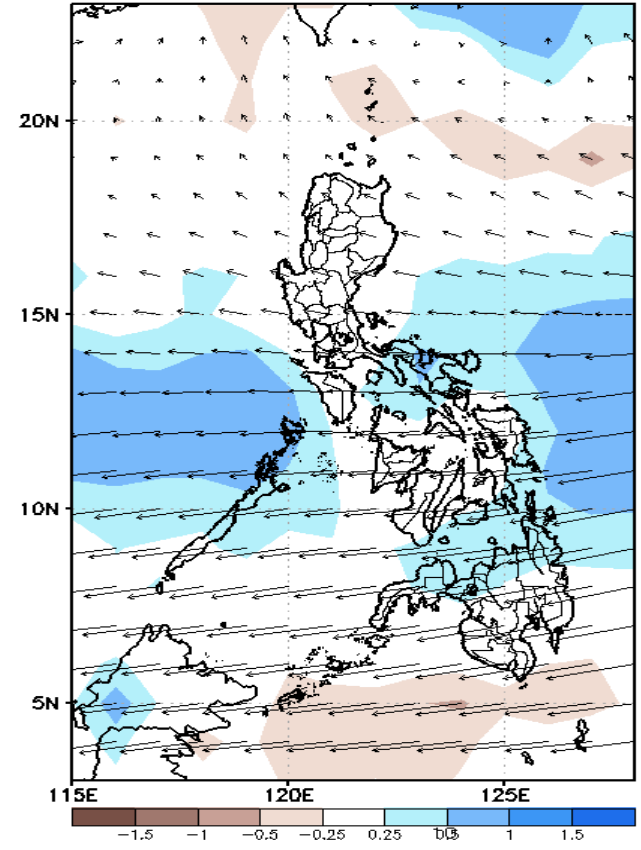
GEFS Week-1 850-hPa Divergence and Wind Anom
Valid: 20220909 - 20220915



GEFS Week-1 700-hPa Divergence and Wind Anom
Valid: 20220909 - 20220915



GEFS Week-1 200-hPa Divergence and Wind Anom
Valid: 20220909 - 20220915

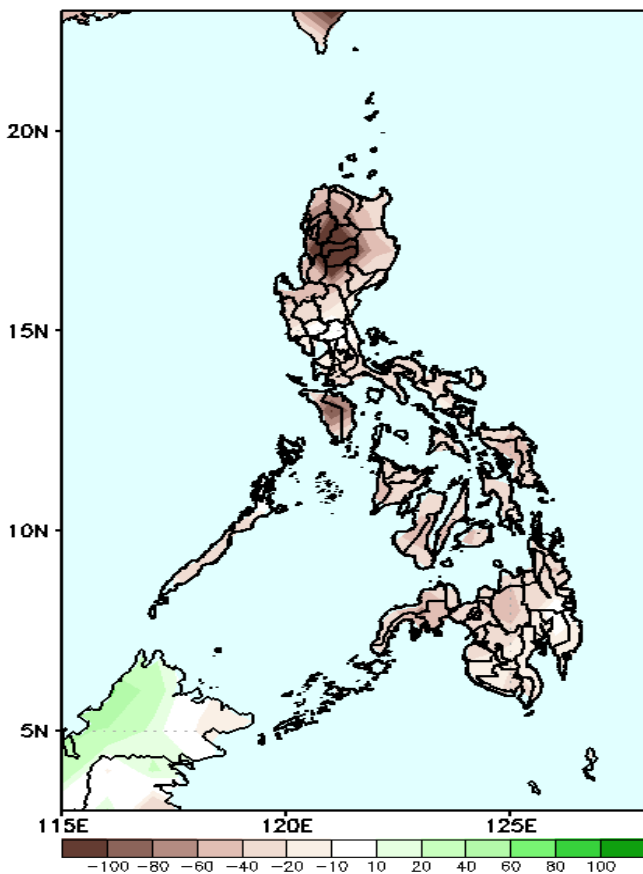


Northwesterly wind anomaly affecting northern Luzon; Southwest Monsoon affecting the rest of Luzon and Visayas while Easterlies affecting most parts of Mindanao during the forecast period.

Precipitation Anomaly and Exceedance Probability > 25/50 mm

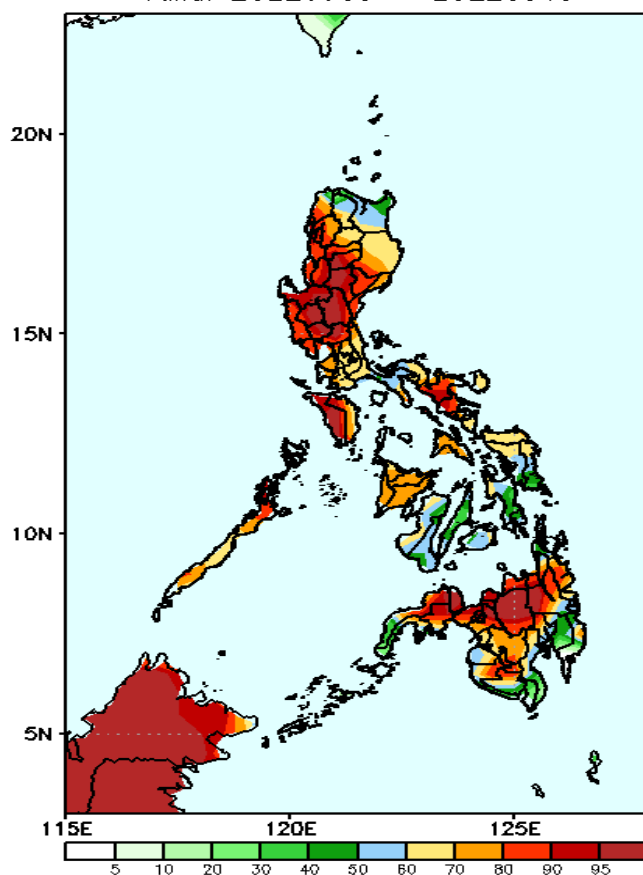
Week 1: Sep 09-15, 2022

GEFS Week-1 Precip Anomaly
Valid: 20220909 - 20220915



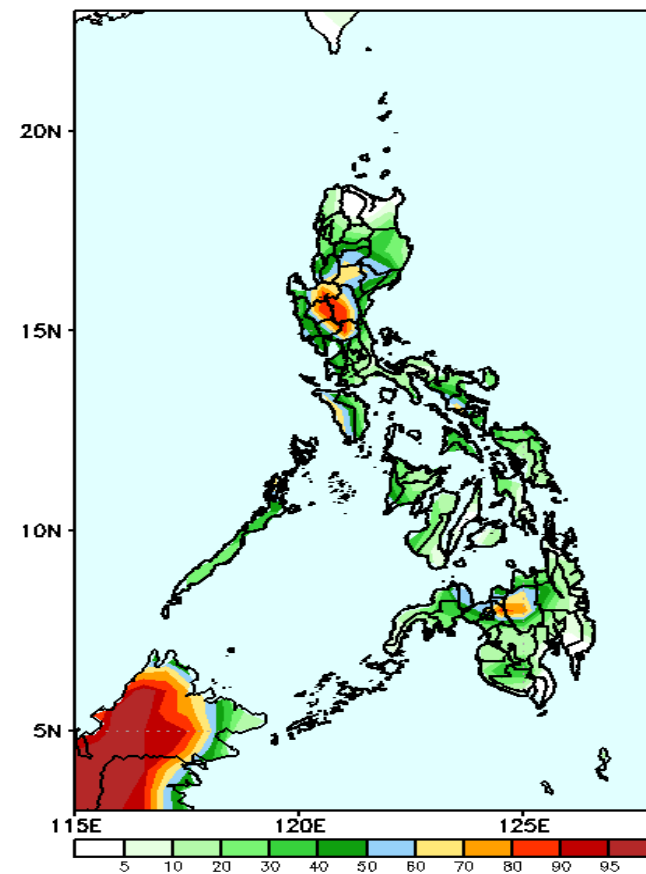
Rainfall deficit of more than 100mm is expected in most parts of Ilocos & Cordillera Region and 40-100mm for the rest of the country during the forecast period.

GEFS Week-1 Exceedance Prob. > 25mm
Valid: 20220909 - 20220915



High probability of rainfall to exceed 25mm in most parts of the country except in some areas in southern parts of Visayas and Mindanao during the forecast period.

GEFS Week-1 Exceedance Prob. > 50mm
Valid: 20220909 - 20220915



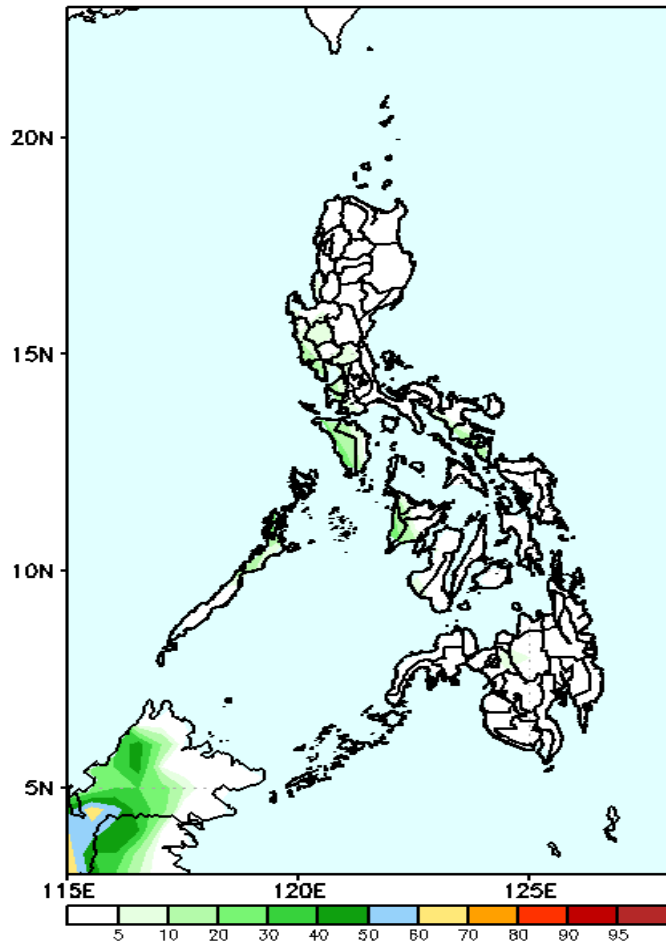
High probability of rainfall to exceed 50mm in some areas in Central Luzon, Pangasinan and Bukidnon while less likely for the rest of the country during the forecast period.



Exceedance Probability > 100/150/200 mm

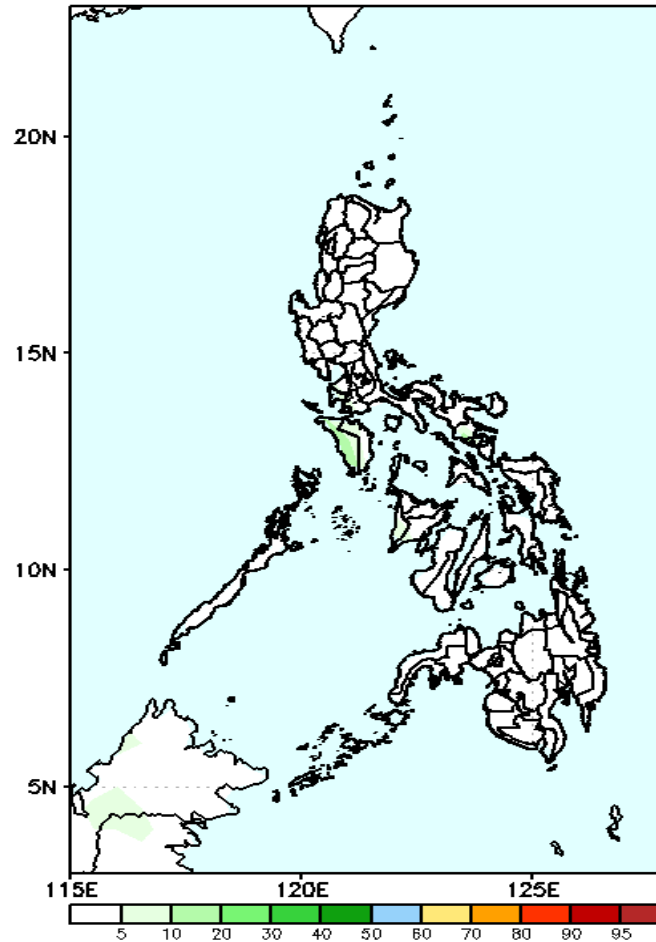
Week 1: Sep 09-15, 2022

GEFS Week-1 Exceedance Prob. > 100mm
Valid: 20220909 - 20220915



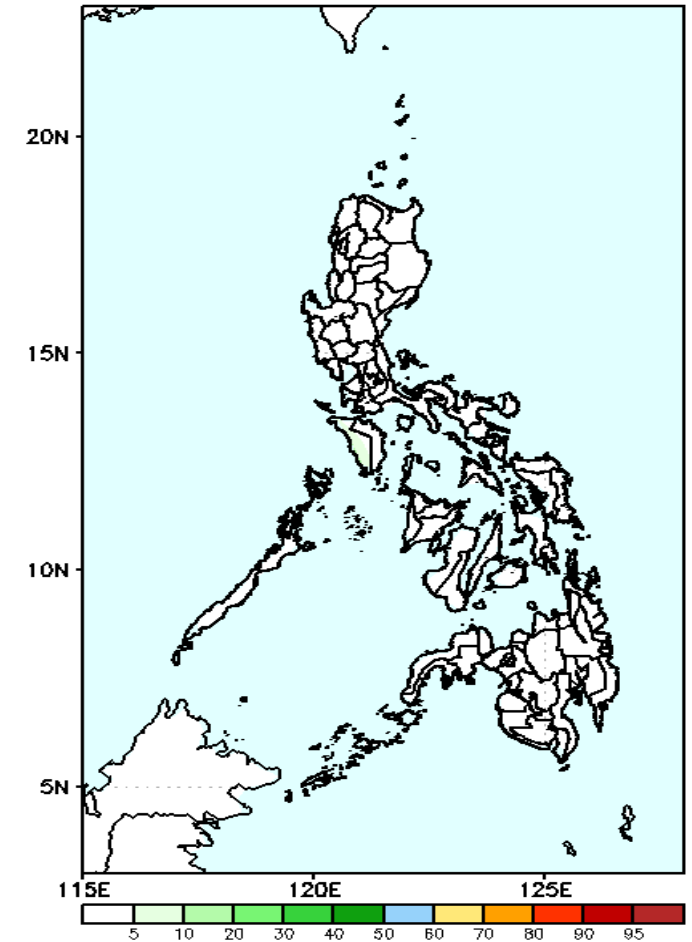
Low probability of rainfall to exceed 100mm in most parts of the country during the forecast period.

GEFS Week-1 Exceedance Prob. > 150mm
Valid: 20220909 - 20220915



Low probability of rainfall to exceed 150mm in most parts of the country during the forecast period.

GEFS Week-1 Exceedance Prob. > 200mm
Valid: 20220909 - 20220915

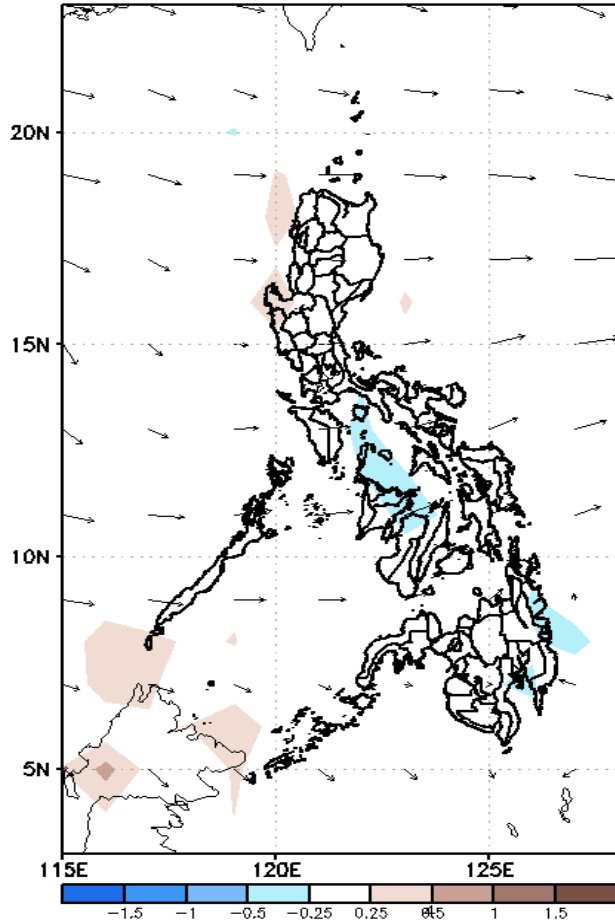


Low probability of rainfall to exceed 200mm in most parts of the country during the forecast period.

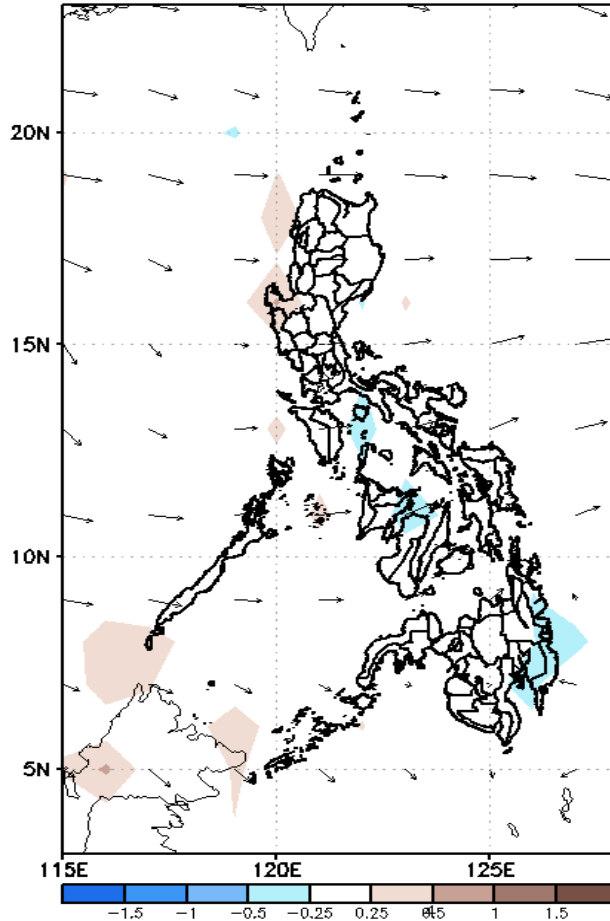
GEFS Week-2 Forecasts: Wind Anomaly Forecast

Week 2: Sep 16-22, 2022

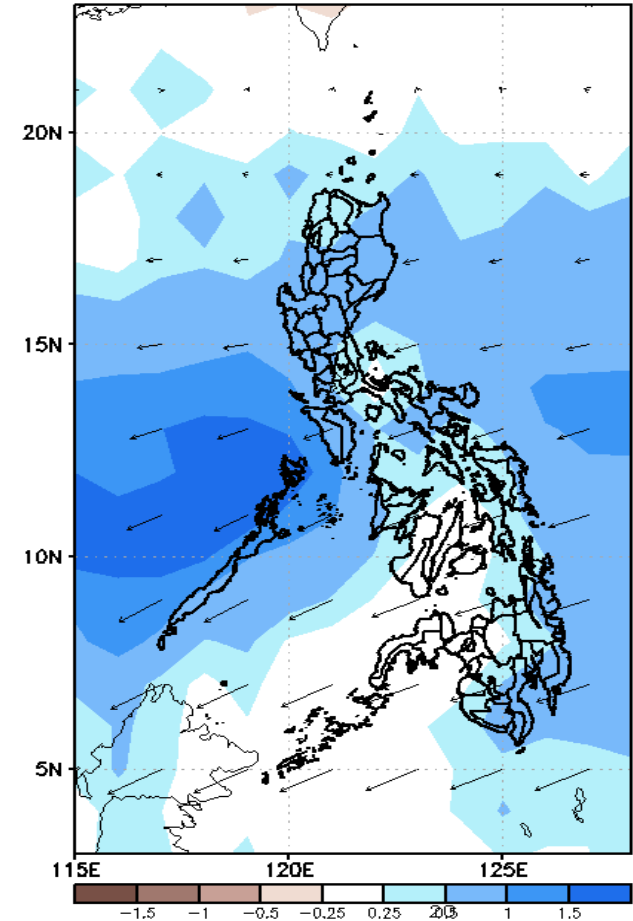
GEFS Week-2 850-hPa Divergence and Wind Anom
Valid: 20220916 - 20220922



GEFS Week-2 700-hPa Divergence and Wind Anom
Valid: 20220916 - 20220922



GEFS week-2 200-hPa Divergence and Wind Anom
Valid: 20220916 - 20220922

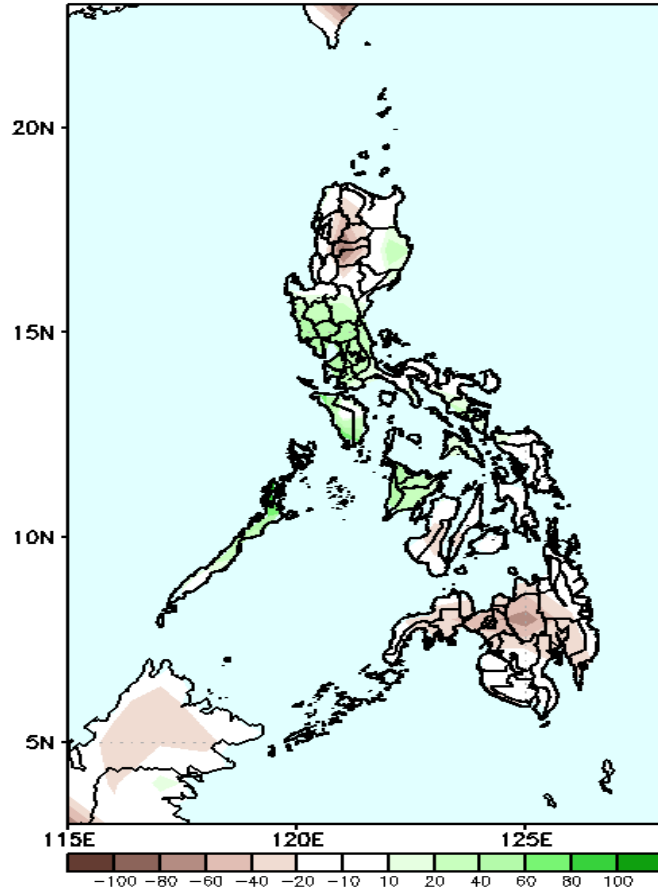


Southwest Monsoon affecting most parts of the country during the forecast period.

Precipitation Anomaly and Exceedance Probability > 25/50 mm

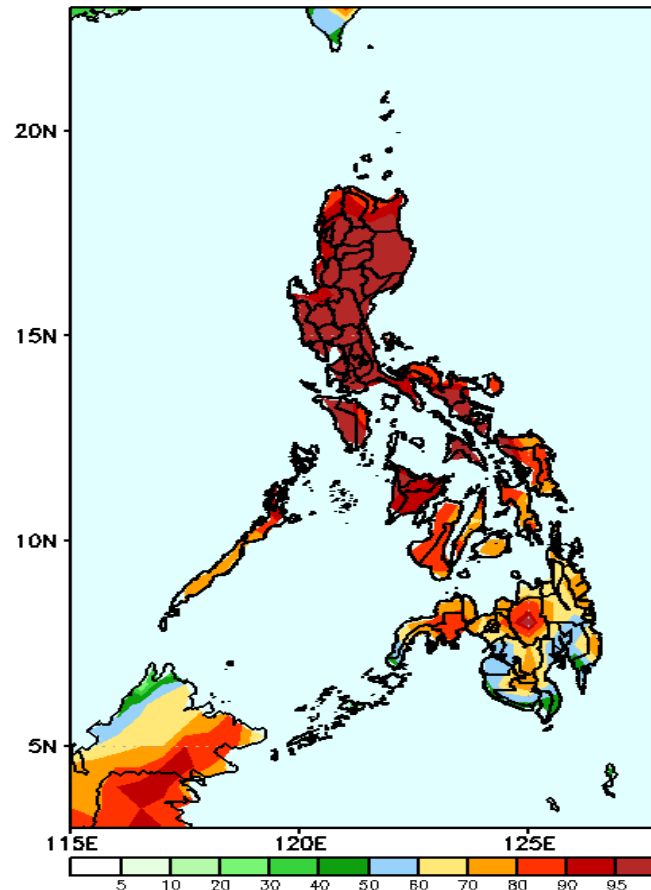
Week 2: Sep 16-22, 2022

GEFS Week-2 Precip Anomaly
Valid: 20220916 - 20220922



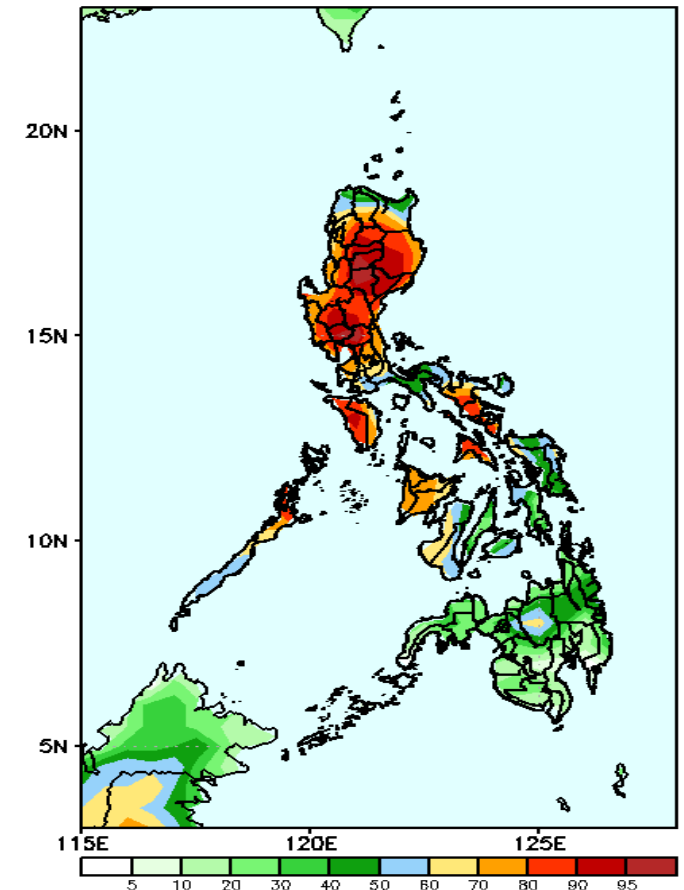
Rainfall deficit of 40-60mm is expected in Cordillera Region and most parts of Visayas (except Panay Island) and Mindanao while the rest of the country will likely receive above normal rainfall.

GEFS Week-2 Exceedance Prob. > 25mm
Valid: 20220916 - 20220922



High probability of rainfall to exceed 25mm in most parts of the country during the forecast period.

GEFS Week-2 Exceedance Prob. > 50mm
Valid: 20220916 - 20220922



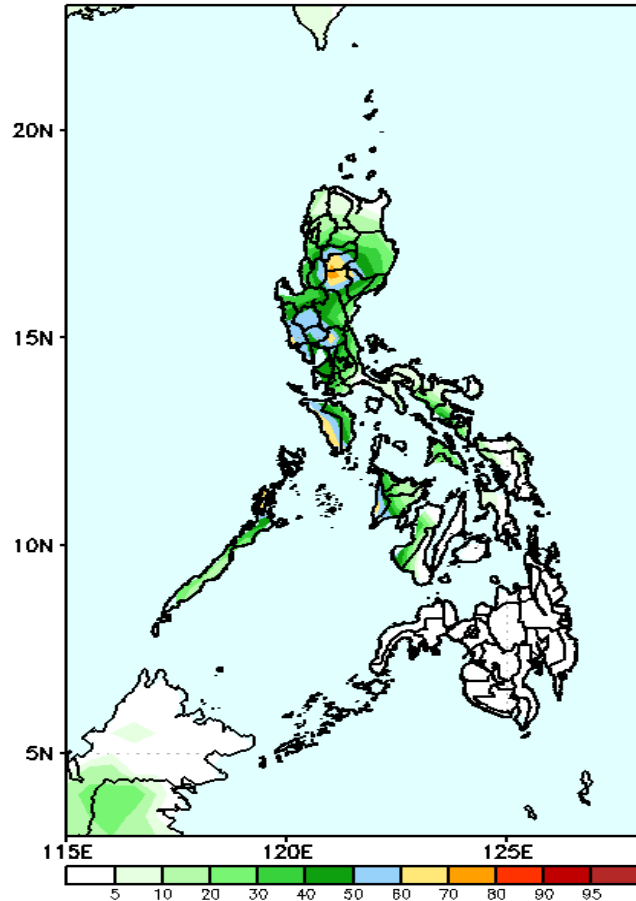
High probability of rainfall to exceed 50mm in most parts of Luzon and western Visayas while less likely for the rest of the country during the forecast period.



Exceedance Probability > 100/150/200 mm

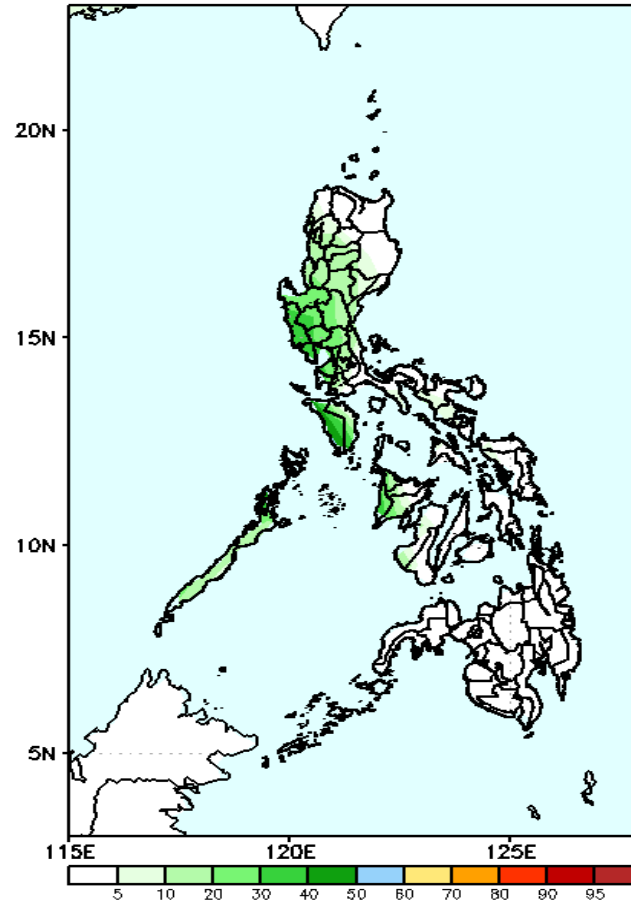
Week 2: Sep 16-22, 2022

GEFS Week-2 Exceedance Prob. > 100mm
Valid: 20220916 - 20220922



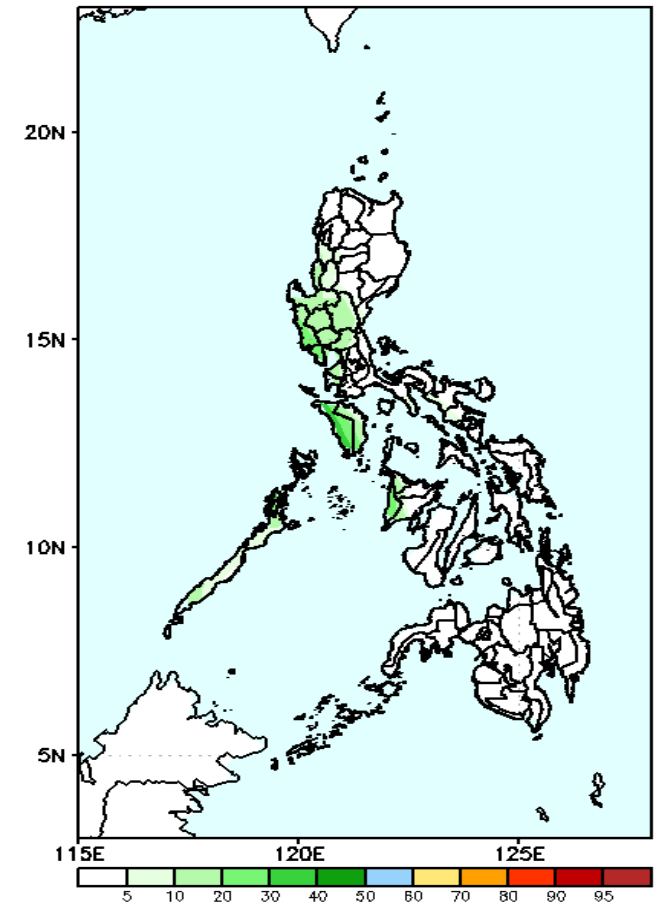
Low probability of rainfall to exceed 100mm in most parts of the country during the forecast period.

GEFS Week-2 Exceedance Prob. > 150mm
Valid: 20220916 - 20220922



Low probability of rainfall to exceed 150mm in most parts of the country during the forecast period.

GEFS Week-2 Exceedance Prob. > 200mm
Valid: 20220916 - 20220922

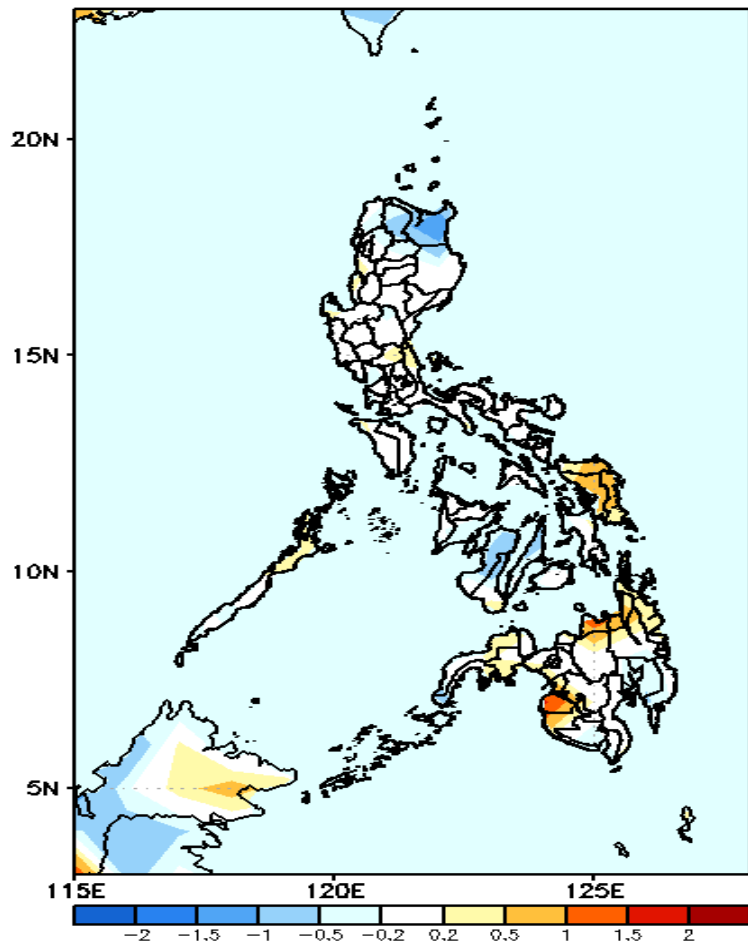


Low probability of rainfall to exceed 200mm in most parts of the country during the forecast period.



GEFS Week-1 & 2 Forecasts: T2m Anomaly

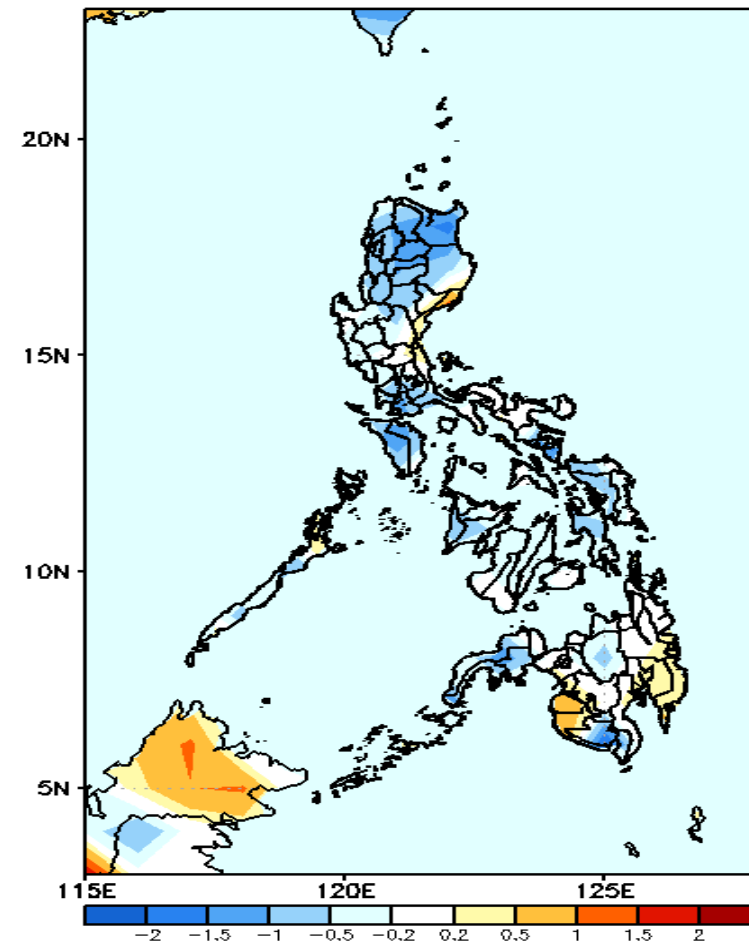
GEFS Week-1 T2m Anomaly
Valid: 20220909 – 20220915



2m Temperature Week 1: Sep 09-15, 2022

Near average surface air temperature will likely experience in most parts of the country, except in Apayao, Cagayan and Negros Island (slightly cooler) and Samar provinces, northern Mindanao and Maguindanao (slightly warmer to warmer) during the forecast period.

GEFS Week-2 T2m Anomaly
Valid: 20220916 – 20220922



2m Temperature Week 2: Sep 16-22, 2022

Cooler than average surface air temperature will likely experience in most parts of northern & southern Luzon, most parts of Mindanao, Zamboanga Peninsula and south Cotabato while slightly warmer to warmer temperature in Maguindanao, Sultan Kudarat and Davao Region.